

# PRODUCT SELECTION

PACKAGING



2019

## SLEEVES for pots and hanging baskets

The clear sleeves are transparent like clear glass while the satin sleeves have a frosted look.

Description	Pots / baskets	Size	Quantity/ case	Code
Crystal for pot	4 ½"	5" x 13" x 14"	2000	SLP414
Crystal for pot	6" to 6 ½"	8" x 19" x 18"	1000	SLP618
Crystal for pot	6" to 6 ½"	8" x 20" x 22"	1000	SLP622
Satin for pots	7" to 8"	9" x 24" x 30"	500	SLS730
Satin for hanging basket	7 ½" to 8"	11" x 24" x 22"	1000	SLS822
Satin MAXI vented basket	7 ½" to 8"	11" x 24" x 22"	1000	SLS822V
Satin for hanging pots	8" to 10"	10" x 30" x 30"	500	SLS1030
Satin MAXI vented pot	8" to 10"	10" x 30" x 30"	500	SLS1030V
Satin for hanging basket	10"	13" x 26" x 24"	500	SLS1024
Satin MAXI vented pot	10"	13" x 26" x 24"	500	SLS1024V
Satin for hanging basket	10"	13" x 24" x 22"	1000	SLS1022
Satin for hanging basket	12"	15" x 30" x 30"	500	SLS1230H
Satin MAXI for hanging basket vented	12"	15" x 30" x 30"	500	SLS1230V



## Foiljacket

Pots	Color*	Quantity/ case	Code
4 ½"	Green	1000	FJ456FV
6"	Green	1000	FJ69FV
6 ½"	Green	1000	FJ659FV
10"	Green	500	FJ1012FV

\*Also available in pink, purple, Christmas, gold, spring and red.



FJ69FV

## Carpet protector

Description	Length x Width	Code
36" roller dispenser	—	DIST36
48" roller dispenser	—	DIST48
White floorliner (500 sheets/roll)*	36" x 48"	6756

\* Custom printing on demand.



Roller Dispenser



White floorliner

## Stretch wrap

Description	Length x Width	Code
Stretch wrap (Tyco masterwrap)	3" x 1500'	STRETCH3
Stretch wrap (325 mm x 11.9 micron x 450 m)	13" x 1476'	4396
Stretch wrap (20.3 micron)	18" x 1500'	4398
Stretch wrap dispenser	—	STRETCH.DIS



STRETCH.DIS

## Flagging tape

Size	Color	Code
1" x 150'	Blue	RURS01150B
1" x 150'	Yellow	RURS01150J
1" x 150'	Orange	RURS01150O
1" x 150'	Pink	RURS01150P
1" x 150'	Red	RURS01150R
1" x 125'	White	RURS01150W
1" x 500'	Metalic	RURS01500M

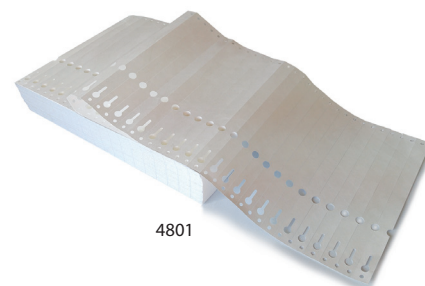


Flagging Tape

## Identification tag, tape and pencil

Description	Color	Quantity/ case	Code
Label loop 3/4" x 8"	White*	500	4920
Label loop 1" x 8 1/4" with "VENDU" mention	Red	500	4720
Label loop FIBERFLEX 5/8" x 8 3/4"	White	2500	4801
Type A (rounded end) 5/8" x 5"	White*	1000	4609.1
Type B (square end) 5/8" x 5"	White	500	4618.1
Type T 5"	White	50	4620
Type T 8"	White	50	4621
Type T 12"	White	50	4622
Type T 18"	White	50	4623
Label for barcode 1 1/4" x 1" <i>Weather proof</i>	White	1000	6800
Self-sealing, rectangular with "SPECIAL" mention	Orange	1000	CTESLR.1
Self-sealing, oval with "SPECIAL" mention	Orange	500	CTESPO
Self-sealing, rectangular B2 1" x 1 1/2"	Orange	450	CTERB2
3/8" x 541' (165 m) vinyl tape	Green	1	RUC38V
3/8" x 541' (165 m) vinyl tape	Yellow	1	RUC38J
3/8" x 541' (165 m) vinyl tape	Blue	1	RUC38U
3/8" x 541' (165 m) vinyl tape	Red	1	RUC38R
Vinyl tape Dispenser	Blue	1	RUCDRB
Sharpie fine pencil	Black	12	SHCRAY

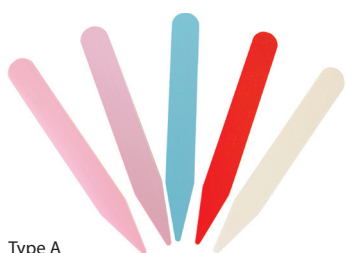
\*Also available in red, pink, orange, blue, green, purple and yellow.



4801



CTESLR.1



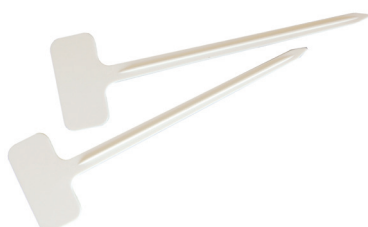
Type A



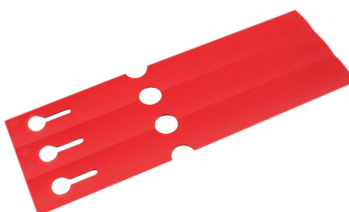
Type B



CTESPO



Type T



Label loop



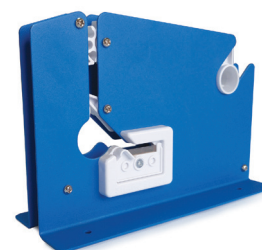
RUC38J



4720



CTERB2



RUCDRB

## Bamboo stakes

Description	Quantity/ case	Code
24" Natural 6/8 mm	2000	TBAN24
36" Natural 10/12 mm	500	TBAN36
48" Natural 12/14 mm	500	TBAN48
60" Natural 12/14 mm	500	TBAN60
72" Natural 18/20 mm	100	TBAN72
84" Natural 20/22 mm	100	TBAN84.1
96" Natural 22/24 mm	50	TBAN96.4
108" Natural 24/26 mm	50	TBAN108.2
120" Natural 26/28 mm	50	TBAN120.2
144" Natural 26/28 mm	50	TBAN144
18" Green 5/7 mm	2000	TBAV18
36" Green 6/8 mm	1000	TBAV36.2
48" Green 8/10 mm	1000	TBAV48
24" Green 5/7 mm (25 package of 25)	625	TBAV24R
36" Green 6/8 mm (25 package of 25)	625	TBAV36R
48" Green 8/10 mm (25 paquets de 25)	625	TBAV48R
60" Green 10/12 mm (25 package of 6)	150	TBAV60
72" Green 10/12 mm (25 package of 6)	150	TBAV72
12" Green Split (sharped) 3/3.5 mm	5000	TBAS12
18" Green Split (sharped) 5/5.5 mm	2500	TBAVP18
24" Green Split (sharped) 5/5.5 mm	2500	CTBVFS2455



## U Bamboo stakes

Description	Quantity/ case	Code
18" natural	100	TBAU18
24" natural	100	TBAU24
30" natural	100	TBAU30
36" natural	100	TBAU36.1
42" natural	100	TBAU42
48" natural	100	TBAU48
60" natural	100	CTSTUT0150



## Trellis bamboo stakes

Description	Quantity/ case	Code
18" natural (ladder)	100	TBAT18
24" natural (ladder)	100	TBAT24
30" natural (ladder)	100	TBAT30
36" natural	50	TBAT36
48" natural	50	TBAT48



## "T" Metallic stakes

Description	Code
Thin green 6'	2892
Thin green 7'	3277
Thin green 8'	3278
Tree buckle 14.5" black	5734
Tree buckle 18" black (2 / pack)	JASLB218U



5734



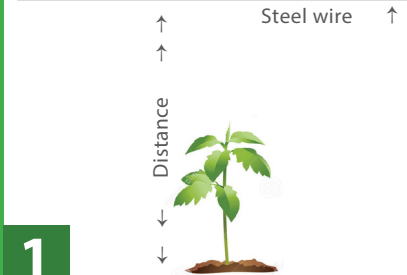
JASLB218U



T Metallic stakes

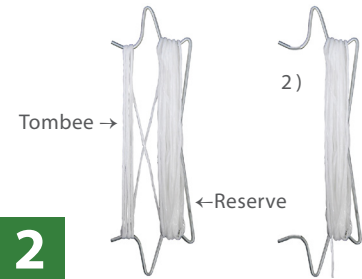
## Tomato hook installation

Measure the distance between the steel wire and the base of the plant.



1

1. Unwind the twine to the ground.
2. Roll up the exedant on the "Reserve".



2

Hang the hook to the steel wire.



3

1. Fix the twine at the base of the plant with a tomato clip.
2. As the plant grow, ad tomato clips.
3. Make sure the twine is always stretched.



4

## Tie, rope and velcro

Description	Quantity/ case	Code
Green Velcro 1/2" x 30' (Plant clip)	12	VEL12
Black Binding tube for stake 3 mm x 656' (roll)	1	TBT3200
Black Binding tube for stake 4 mm x 492' (roll)	1	TBT4150
Black Binding tube for stake 5 mm x 1968' (roll)	1	TBT5600
Black Binding tube for stake 6 mm x 1476' (roll)	1	TBT6450
Black Binding tube for stake 7 mm x 1148' (roll)	1	TBT7350
Wire/Cable Tree Tighteners	100	TWCTT
Tomato white rope 21 700'	1	TCP1500
White twisted rope 1/4" x 1500'	1	TCTF150
White rope braided nylon 3/16" x 250'	1	CO316
White rope braided nylon 1/8" x 1000'	1	CO8100
Blue polypropylene rope 9000' (UV)	1	CTCP140
Sisal rope 1/4" x 1500'	1	SISAL



Tomato white rope  
21 700'



White rope braided  
nylon 3/16"



Sisal rope



Wire/Cable Tree Tighteners  
TWCTT



Black clip for stake (roll)

## Clip, hook, grafting slip for tomatoes

Description	Quantity/ case	Code
Tomato Clips 23 mm	6 500	CLTO23
Tomato Clips 23 mm (light)	8 000	CLTO23L
Hydrangea clips	500	CLHO.U
Double tomato hook (220 mm) 8 1/2"	333	CRTOM
Tomato hook (220 mm) 8 1/2" and 32' of blue rope	1	CRTOM32
Tomato hook (180 mm) 7" and 62' of white rope	1	CRTOM40
Tomato hook (220 mm) 8 1/2" and 54' of white rope	1	CRTOM40.1
Tomato grafting clips 1.3 mm	250	PGT13
Tomato grafting clips 1.6 mm	250	PGT16
Tomato grafting clips 2.7 mm	250	PGT27
Flexible stem reinforcing arch for tomatoes	20 000	RTTF
White support for clusters of tomatoes	9000	CTSUGF



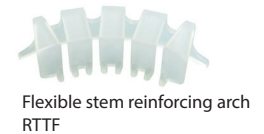
Tomato Clips



Tomato grafting



Hydrangea clips  
CLHO.U



Flexible stem reinforcing arch  
RTTF



Arch Tomato Cluster  
Supports White  
CTSUGF

## MAX Tapener System

Description	Quantity/ case	Code
Duratool Tapener J99	1	5557
Staples for MAX Tying Tool 604E	4800	6138
MAX Tape blue 11 mm x 26 m	10	5559
MAX Tape red 11 mm x 16 m	10	5560
MAX Tape green 11 mm x 24 m	10	5562
Blades for MAX Tying Tool	3	6210
MAX Tapener HT-R2 large	1	5558
MAX Tape green 6 mm x 60 m MAX Tapener HT-R2 large	24	5565



Staples for MAX Tying Tool 604E



Blades for MAX Tying Tool



Duratool Tapener J99



MAX Tape red

## Brown paper bag

Description	Length x height x depth	Quantity/ case	Code
¼ pd	3" x 5" x 1 7/8"	500	SAPB00
1 pd	3 ½" x 6 ½" x 2 ½"	500	SAPB01
3 pds	4 ¾" x 8 ¼" x 3"	500	SAPB03
5 pds	5 ¼" x 10" x 3 ½"	500	SAPB05
6 pds	6" x 11" x 3 5/8"	500	SAPB06
8 pds	6 ¼" x 12 ½" x 3 ¾"	500	SAPB08
10 pds	6 ½" x 13 ¼" x 4"	500	SAPB10
14 pds	7 ¾" x 14 ½" x 4 ¼"	500	SAPB14
Grocery— Extra strong	12" x 17" x 7"	400	SAPBEX



Brown paper bag



SAPBEX

## Printed paper potatoes bag

Description	Color	Quantity/ case	Code
5 pds solid bag (without window)	White	400	SD5BLS
5 pds solid bag (without window) - for red potatoes	White	400	SD5BLR
5 pds bag with mesh window	White	400	SD5BLM
5 pds bag with mesh window - for red potatoes	White	400	SD5BRM
10 pds solid bag (without window)	White	400	SD10BLS
10 pds solid bag (without window) - for red potatoes	White	400	SD10BLR
10 pds bag with mesh window	White	400	SD10BLM
10 pds bag with mesh window - for red potatoes	White	400	SD10BRM
20 pds solid bag (without window)	White	250	SD20BS
20 pds solid bag (without window) - for red potatoes	White	250	SD20BT
20 pds bag with mesh window	White	250	SD20BLM
20 pds bag with mesh window - for red potatoes	White	250	SD20BR
50 pds solid bag (without window)	Brown	100	SD50B2
50 pds solid bag (without window) - for big potatoes	Brown	100	SD50BL
50 pds solid bag (without window) - for red potatoes	Brown	100	SD50BP



5 pds without window  
SD5BLS



5 pds with mesh window  
SD5BLM



50 pds without window  
SD50B2



50 pds without window —  
for red potatoes SD50BP



10 pds without window — for red potatoes  
SD10BLR



10 pds with mesh window — for red  
potatoes SD10BRM



50 pds without window —  
for big potatoes SD50BL

## Plastic Bags

Description	Color	Length x depth x height	Quantity/case	Code
T-shirt mini bag	White	8" x 4" x 16"	2000	SABMIN
T-shirt mini bag	White	9" x 6" x 18"	1000	SABS1P
T-shirt oxo-biodegradable bag (small)	Green	8 1/2" x 5" x 16"	1000	SABS1V
T-shirt S4 medium bag	White	12" x 6" x 21"	1000	SABS4M
T-shirt oxo-biodegradable bag (medium)	Green	12" x 6" x 21"	1000	SABS4B
T-shirt S5 large bag	White	12" x 8" x 22"	1000	SABS5G
T-shirt bag HD (500 bags/roll)	Clear	8 1/2" x 5" x 18"	8	SABHDR
1 pd	Clear	3 1/2" x 1 1/2" x 8"	500	SAP010
1 1/2 pds	Clear	3 1/2" x 1 1/2" x 9"	500	SAP015
2 pds	Clear	4" x 2" x 10"	500	SAP020
2 1/2 pds	Clear	4" x 2" x 11"	500	SAP025
3 pds	Clear	5" x 2" x 11"	500	SAP030
4 pds	Clear	5" x 3" x 12"	500	SAP040
5 pds	Clear	5" x 3" x 14"	500	SAP050
6 pds	Clear	5" x 3" x 15"	500	SAP060
7 pds	Clear	6" x 3" x 15"	500	SAP070
8 pds	Clear	7" x 3" x 16"	500	SAP080
9 pds	Clear	7" x 3" x 18"	500	SAP090
10 pds	Clear	7" x 3" x 20"	500	SAP100
11 pds	Clear	8" x 4" x 18"	500	SAP110
12 pds	Clear	8" x 4" x 20"	500	SAP120
13 pds	Clear	8" x 4" x 22"	500	SAP130
15 pds	Clear	12" x 3" x 20"	500	SAP150
20 pds	Clear	12" x 6" x 26"	200	SAP200
Perforated 2 pds	Clear	4" x 2" x 10"	500	SAP02T
Perforated 4 pds	Clear	5" x 3" x 12"	500	SAP04T
Perforated 5 pds	Clear	5" x 3" x 14"	500	SAP05T
Perforated 6 pds	Clear	5" x 3" x 15"	500	SAP06T
Perforated 7 pds	Clear	6" x 3" x 15"	500	SAP07T
Perforated 8 pds	Clear	7" x 3" x 16"	500	SAP08T
Perforated 10 pds	Clear	7" x 3" x 20"	500	SAP10T
Perforated 12 pds	Clear	8" x 4" x 20"	500	SAP12T
Perforated 15 pds	Clear	12" x 3" x 20"	1000	SAP15T
Poly Bag for broccoli	Clear	4" x 10 3/4" x 14"	1000	SAPBRO
Bag 35L (3.5 mil)	Clear	16" x 32"	300	3581
Bag 35L (3.8 mil)	White	16" x 32"	200	SA1632B.1
Roll of 1500 bags	Clear	10 1/2" x 20"	2	SAP102
Roll of 2000 bags	Clear	10 1/2" x 15"	2	SAP105
3 pds for apples — Printed	Clear	8" x 16"	100	SATSP3
10 pds Plastic bag with cord for U-pick apple	Printed	11 1/2" x 16"	1000	SAPOM1
20 pds Plastic bag with cord for U-pick apple	Printed	14 3/4" x 17 1/2"	400	SAPOM2
Roll of 500 perforated bags .003	Clear	14" x 32"	1	SAPERC



T-shirt mini bag



T-shirt oxo-biodegradable bag



T-shirt bag HD (500 bags/roll)



4 pds clear SAP040



3 pds for apples SATSP3

## Mesh bags

Description	Length x height	Color	Code
Corn — Unprinted	21" x 36"	Green	SA2136U
Corn — Printed	22" x 36"	Green	SALM22
Corn — Unprinted	22" x 36"	Green	SAVNR2U
Corn — Unprinted	23" x 36"	Green	SAVNR2U
Corn — Unprinted	25" x 36"	Green	SAVNBC
Corn — Printed	25" x 36"	Green	SALM25
Beans — Unprinted	18 1/2" x 32"	Tangerine	SALT18U
Onions — Printed	10 pds	Tangerine	SALO10.1
Onions — Printed	25 pds	Tangerine	SASO25



Onions



Sweat corn

## Elastics (1 pd)

Description	Color	Code	Description	Color	Code
N° 10	Red	CTEL10R	N° 32 UV Cauliflower	Blue	CTEL32CB
N° 14	Red	CTEL14R	N° 32 UV Cauliflower	Yellow	CTEL32CJ
N° 18	Red	CTEL18R	N° 32 UV Cauliflower	Red	CTEL32CR
N° 32	Blue	CTEL32B	N° 32 UV Cauliflower	Green	CTEL32CV
N° 32	Red	CTEL32R	N° 61	Green	CTEL61V
N° 32	Green	CTEL32V	N° 62	Red	CTEL62R



N° 32 UV Cauliflower

## Ties

Description	Quantity/ case	Code
4" Galvanized Pin ties	2500	347
5" Galvanized Pin ties	2500	6277
6" Galvanized Pin ties	2500	CTABS6
7" Galvanized Pin ties	2500	CTABS7
12" Galvanized Pin ties	2500	348
Twister — Tool for tying pins	1	4936
4" Twist-Em Paper clip	2000	2759
7" Green paper Twist-Tie	2000	CTAW07V
8" Green paper Twist-Tie	2000	CTAW08V



Twister — Tool for tying pins  
4936



Green Tie

## Wood and plastic cases, clamshells

Description	Quantity/ case	Code
Wooden case 1 pint (568 ml)	500	CTBCBC
Wooden case 1 quart (1.137 L)	500	CTBCBP
Green pulp container 1 pint (568 ml)	500	CTBPCV
Green pulp container 1 quart (1.137 L)	250	CTBPPV
Red plastic case 250 ml	2000	CTBCR2
Red plastic case 550 ml	2000	CTBCR5
Blue plastic case 550 ml	2000	CTBCB5
Clamshell case 120 g	576	CTPC120C
Clamshell case 550 ml	516	CTPC55C
Clamshell case 1 pd	380	CTPC1L
Clamshell case 2 pds	180	CTPL2L
Master 6 x 1 pint	1	CTPM61
Raspberry master 12 x 250 ml	25	CTPMFR.1
Clamshell master 12 x 550 ml	25	CTMC12
Generic master 12 x 250 ml and 550 ml	1	CTPMK5
Strawberry master 4 x 3 L	1	CTPMF3



Wooden case



Green pulp container



Red plastic cases



Blue plastic cases



Clamshell case



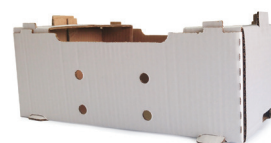
Strawberry master 4 x 3 L  
CTPMF3



Master 6 x 1 pint  
CTPM61



Raspberry master 12 x 250 ml  
CTPMFR.1



Clamshell master 12 x 550 ml  
CTMC12



Generic master 12 x 250 ml and  
550 ml  
CTPMK5



## Cardboard and wood basket for fruits & vegetables

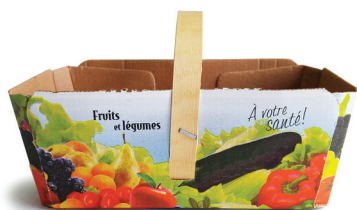
Description	Quantity/ case	Code
Cardboard basket for blueberries 1 L — wooden handle	264	CTPCB1
Cardboard basket for blueberries 2 L — wooden handle	120	CTPCB2
Cardboard basket for blueberries 4 L — wooden handle	64	CTPCB4
Cardboard basket for blueberries 1 L — without handle	1	CTPCB1S
Cardboard basket for blueberries 2 L — without handle	1	CTPCB2S
Cardboard basket for blueberries 4 L — without handle	1	CTPCB4S
Cardboard basket for strawberries 1.5 L — wooden handle	240	CTPCF1
Cardboard basket for strawberries 2 L — wooden handle	150	CTPCF2
Cardboard basket for strawberries 3 L — wooden handle	98	CTPCF3
Cardboard basket for strawberries 500 ml — without handle	525	CTPCL5S
Cardboard basket for strawberries 1 L — without handle	600	CTPCF1SA
Cardboard basket for strawberries 1.5 L — without handle	1	CTPCF1S
Cardboard basket for strawberries 2 L — without handle	360	CTPCF2S
Cardboard basket for strawberries 3 L — without handle	1	CTPCF3S
Cardboard basket for strawberries 4 L — without handle	1	CTPCF4S
Cardboard basket with handle 500 ml	432	CTPCL54
Cardboard basket for berries 500 ml — without handle	1	CTPCPF5S
Cardboard basket for berries 1 L — with handle	264	CTPCL1
Cardboard basket for fruits and vegetables 1.5 L without handle	1	CTPCL15S
Cardboard basket for fruits and vegetables 2 L without handle	1	CTPCL2S
Cardboard basket for fruits and vegetables 3 L without handle	1	CTPCL3S
Cardboard basket for fruits and vegetables 4 L without handle	1	CTPCL4S
Cardboard basket for fruits and vegetables 2 L — with handle	120	CTPCL2
Cardboard basket for fruits and vegetables 3 L — with handle	88	CTPCL3
Cardboard basket for fruits and vegetables 4 L — with handle	1	CTPCL4
Cardboard basket for tomatoes 3 L — with handle	88	CTPCT3
Wooden basket for strawberries 2 quarts — wooden handle	4	CTPBF2
Wooden basket for strawberries 4 L — wooden handle	4	CTPBF4
Wooden basket for blueberries 11 quarts (12.5 L)	1	CTPBB1
9" Plastic handle for cardboard basket	1500	CTPCA9
11" Plastic handle for cardboard basket	1500	CTPCA1



Cardboard basket for blueberries



Wooden basket for blueberries — 11 quarts



Cardboard basket for fruits and vegetables 2 L



Cardboard basket for strawberries 500 ml



Cardboard basket for fruits and vegetables 4 L



Cardboard basket for strawberries 1.5 L



Cardboard basket for tomatoes 3 L



Cardboard basket for strawberries 3 L

## Cardboard boxes

Description	Quantity/ case	Code
Medium box for cucumbers	1	CTBCME
Box for apples (½ bushel)	1	CTBOP5
Box for apples (1 bushel)	1	CTBOP1
Flat box for greenhouse tomatoes (15 pounds)	1	CTBT15
Box for field tomatoes (20 pounds)	1	CTBTC2
Box for lettuce	1	CTBLSF



Medium box for cucumbers  
CTBCME



Box for apples (½ bushel)  
CTBOP1



Box for field tomatoes  
CTBTC2



Box for lettuce  
CTBLSF



Flat box for greenhouse tomatoes (15 pds)  
CTBT15

## Waxed box

Description	Quantity/ case	Code
Medium box for fresh vegetables (1 bushel) 17½" x 12" x 12"	1	CTBL01
Small box for fresh vegetables (½ bushel) 16" x 10¼" x 7¾"	1	CTBL05
Box for cabbages (40-50 pounds)	1	CTBCHO
Small box H-102A for vegetables and zucchinis (20 pounds)	1	CTBLXZ
Box for large fresh vegetables 20" x 17" x 12"	1	CTBTLEGL



Medium box for fresh vegetables  
CTBL01



Box for cabbages  
CTBCHO



Small box for vegetables and zucchinis  
CTBLXZ



Box for large fresh vegetables  
CTBTLEGL

## Wooden manna

Description	Quantity/ case	Code
Wooden manna ¼ bushel 8 ½"	1	CTPB01U
Wooden manna ¼ bushel 11"	1	CTBB03.U
Wooden manna ½ bushel 14" with handles	1	CTBB05
Wooden manna 1 bushel 18" with handles	1	CTBB10U



## Plastic manna

Description	Color	Code
Plastic manna 2 L	Red	CTBP2R
Plastic manna 2 L	Green	CTBP2V
Plastic manna 4 L	Beige	CTBP4B
Plastic manna 4 L	Red	CTBP4R
Plastic manna 4 L	Green	CTBP4V
Plastic manna 8 L	Green	CTBP8V
Rectangular container 1.25 L	Green	CTBP125V
Plastic container 20 pds 16" x 24" x 7 ½"	Purple	LUG20



LUG20

# Obtain financing for the products necessary for your growing...

And cultivate your growth  
by purchasing your  
crop inputs at TERIS

## Cultivate in 5 steps

- 1** Request a crop input credit line
- 2** Buy your crop inputs at TERIS
- 3** Cultivate
- 4** Sell
- 5** Reimburse before March 1<sup>st</sup> of the year following your purchases made between September 1<sup>st</sup> and August 31<sup>st</sup>.

## Just benefits

- Reimbursable at any time, without penalty
- Benefit from early payment discounts
- Low financing rate
- Applicable to your inputs: containers, soils, fertilizers, pesticides...
- Available now



Contact your TERIS sales representative to learn more.



**CANADA** 1.888.622.2710  
**LAVAL** 514.990.9325 3180 St-Aubin Street, Laval QC Canada  
**QUEBEC** 418.667.7575 371 Des Chutes Blvd, Quebec QC Canada

[info@teris.co](mailto:info@teris.co)

[www.teris.co](http://www.teris.co)